



**Rheinhold & Mahla**

Since 1887



Doors

# Table of contents

## Introduction

### Doors

■ Accommodation doors Type B-15M Type I & Type II	1
■ Accommodation doors Type B-15M double	3
■ Accommodation doors Type B-15M Connection	5
■ Accommodation doors Type B-15K & B-15K50	7
■ Accommodation doors Type B-15MK & B-15MK2	9
■ Accommodation doors Type B-15 Sliding	11
■ Accommodation doors Frame Types for B doors	13
■ Accommodation doors Sill Types for B doors	14
■ Accommodation doors Type A-15 single	15
■ Accommodation doors Type A-60 single	17
■ Accommodation doors Type A-60 double	19
■ Accommodation doors Frame Types for A doors	21
■ Accommodation doors Sill Types for A doors	22

# Interior outfitting manufactured by the R&M Group

The products of the R&M Group provide efficient, individual and turnkey solutions for interior outfitting. The extensive portfolio ranges from doors, wet units and pods to furniture, which are manufactured at our production facilities in Wismar and in Rostock (Germany) as well as in Kunshan (China). With our own modern product facilities, we are able to offer very flexible according to customers' requirements and wishes. We consider simultaneously the design as well as economic issues, which play a key role in our daily business.

All the high-quality products meet the highest standards and the most stringent international guidelines. They are characterized with the best fire, noise and vibration protection ensuring comfort and safety on board for passengers as well as crew members. We deliver just-in-time to any desired location in the world.

## Production facilities

### Wismar

In Wismar, we produce furniture according to standard specifications and individual customer requirements. Our excellent design solutions are continuously developed. Thanks to the latest computerized numerical control (CNC) machines, we are also able to meet the most specific requirements in a short turnaround time while maintaining our quality guarantee. Furthermore, together with our suppliers we can offer a range of products, from sophisticated stainless-steel work and superior solid surfaces to creative mirrors, glass features, and high-grade upholstery.

### Rostock

In Rostock, which is very close to Wismar, our central warehouse and logistics center is located as well as the facility for final assembly of our furniture manufacture from Wismar.

### Kunshan

Further production facility is located in Kunshan, near Shanghai. It is the larger facility, where we manufacture for example wet units, doors, wall and ceiling systems. European standards of quality and international logistic guidelines are strictly observed during the entire manufacturing process. The team is multinational and has long-term experience and knows each important characteristics of products.

### Our competences

- Individual customizations and configurations on request
- Complete installation for electrical, air-conditioning and sprinkler systems
- Just-in-time delivery
- Guarantee of quality
- Products at best price-performance ratio
- Assembly line for prefabricated wet units and cabins on site
- Tested and approved structural materials
- Worldwide shipping, assembly and installation on board

## Quality management system

- Quality management system in accordance with the international norm ISO 9001
- Quality assurance system are compliant with Maritime Equipment Directive, Modul D
- It consists of incoming inspection per category, in-process quality control and outgoing inspection and release to delivery
- Quality standards are monitored by the multicultural R&M Quality Management Team

Accommodation doors

Type B-15M Type I & Type II

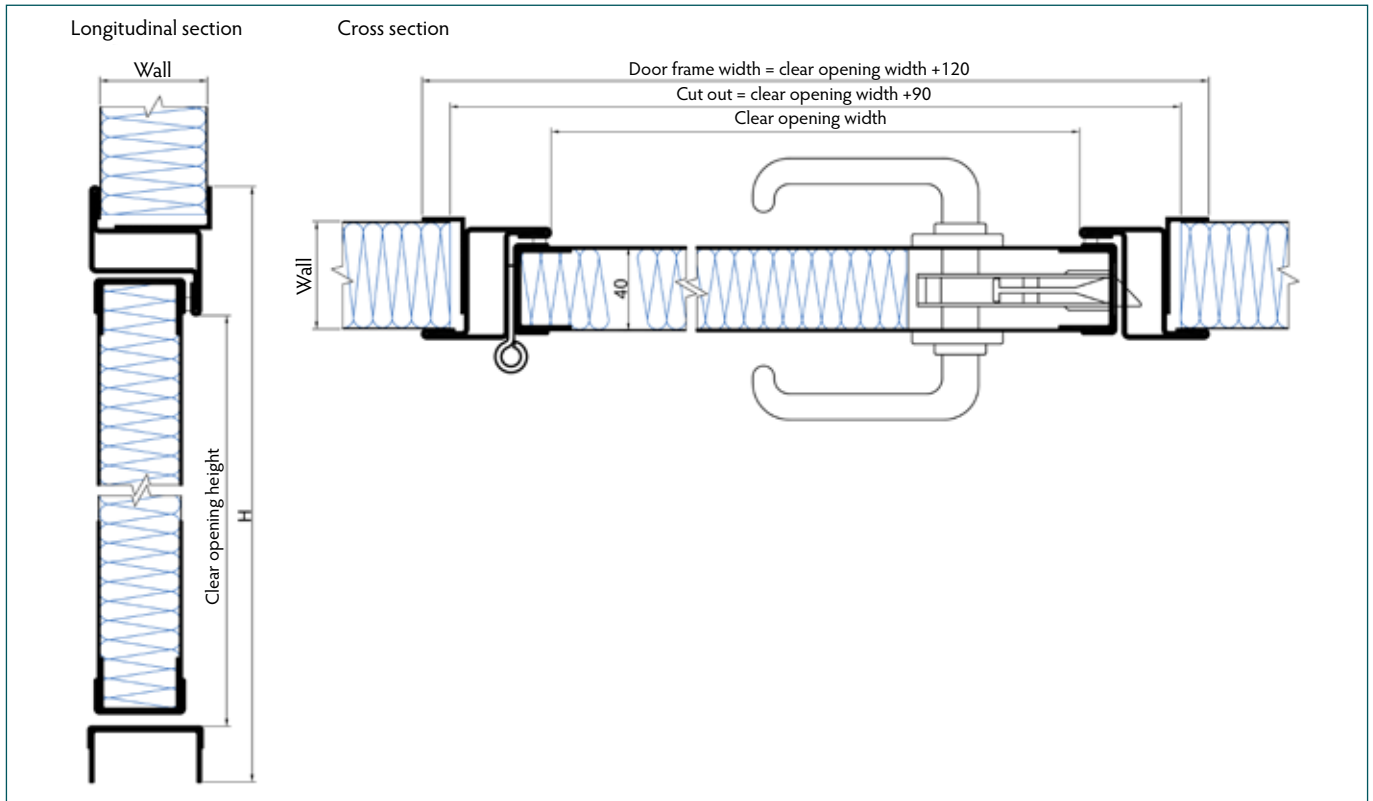


The B-15M accommodation door is used in B-15 fire rated wall systems and can be installed during or after the adjacent wall panels have been assembled. The split clamping frame can be adjusted to fit all relevant wall systems thicknesses. Depending on customer specifications various frame and coaming types as well as additional fixtures can be chosen.

A large variety of surface finishes are available. All of them fitted with a removable protection foil to prevent any damage from occurring during installation. The design of the B-15M accommodation door and all components have been tested and approved according to international standards.

## Accommodation doors

# Type B-15M Type I & Type II



Technical data	B-15M Type I	B-15M Type II
Covering layer (visible side)	Steel	Steel
Covering layer (back side)	Steel	Steel
Fire classification	B-15	B-15
Sound reduction	up to 36 dB *	up to 40 dB *
Thickness	40 mm	40 mm
Element width - Clear opening	up to 1,150 mm **	up to 850 mm
Element height - Clear opening	up to 2,200 mm **	up to 2,009 mm
Weight	~ 59 kg ***	~ 67 kg ***
Equipment - Ventilation	up to 500 cm <sup>2</sup>	---
- Kick-out panel	up to 600 x 600 mm	---
- Window	up to 400 x 400 mm or Ø 400 mm	---
Coating	PVC foil varnish coated (others on request)	PVC foil varnish coated (others on request)
Certification	MED, USCG	MED, USCG

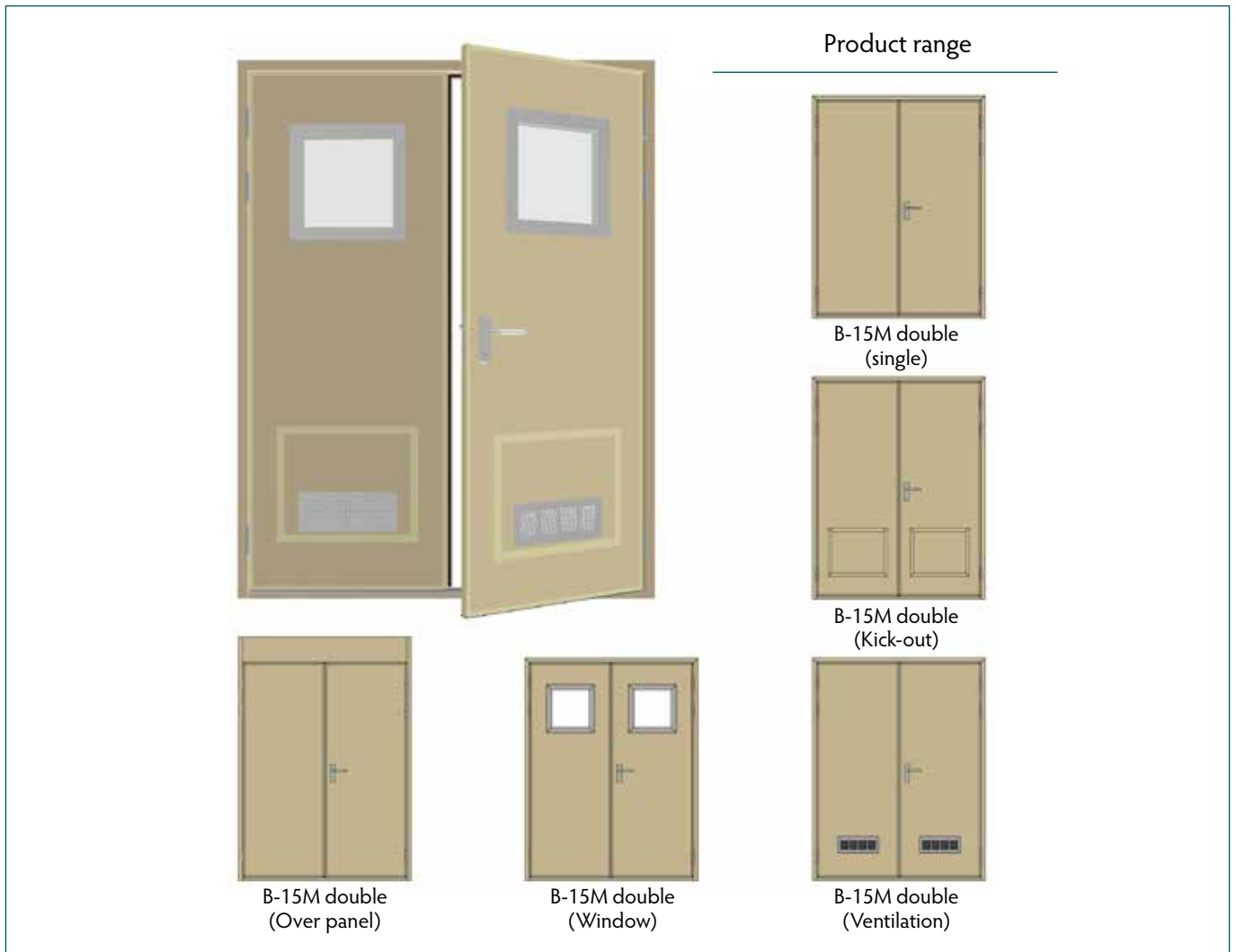
\* please contact us for further information

\*\* tested and certified according to MSC.1/Circ.1319 allowing additionally +15% in width & height (surface area +10%)

\*\*\* based upon clear opening of 800 x 2,000 mm, without lock, escutcheons, handles and additional equipment

Accommodation doors

Type B-15M double

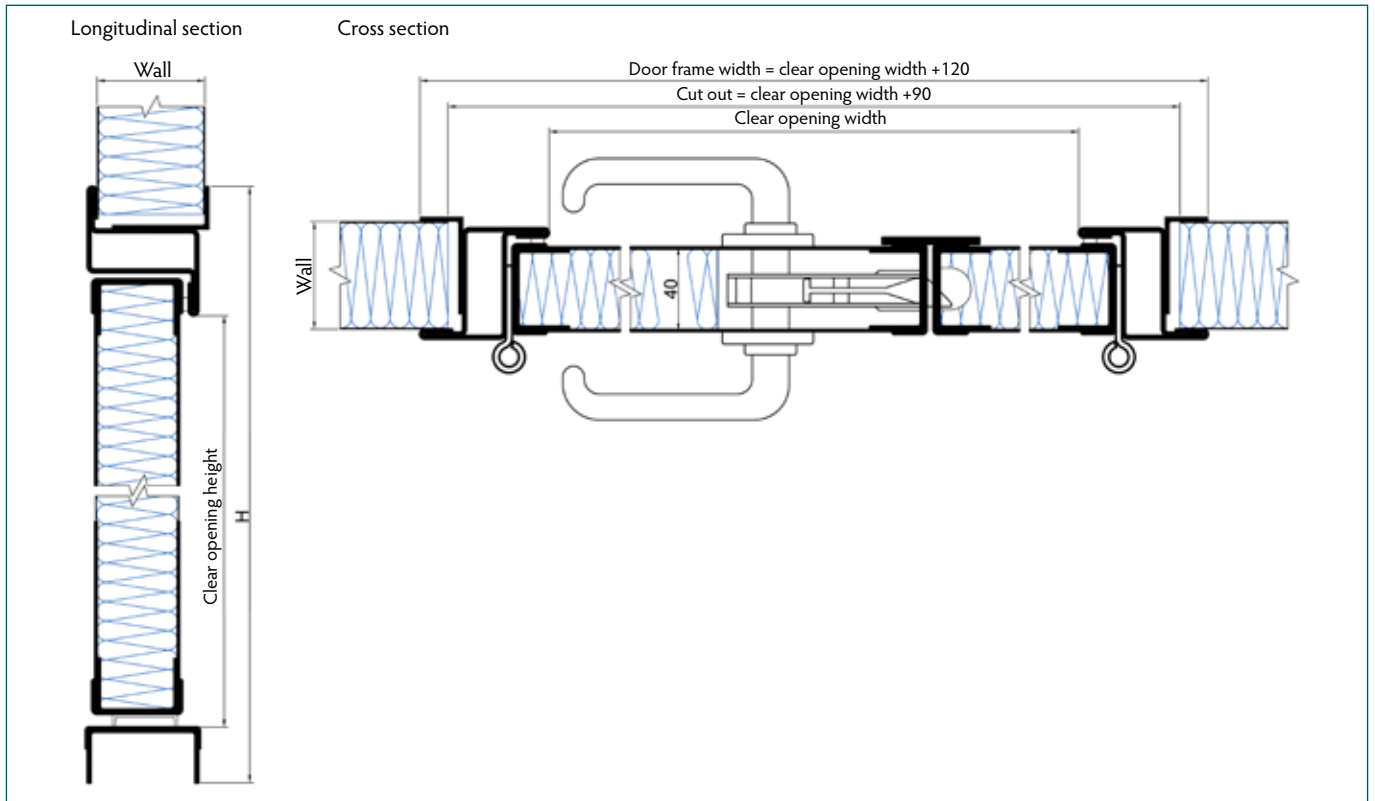


The B-15M double leaf accommodation door is used in B-15 fire rated wall systems and can be installed during or after the adjacent wall panels have been assembled. The split clamping frame can be adjusted to fit all relevant wall systems thicknesses. Depending on customer specifications various frame and coaming types as well as additional fixtures can be chosen.

A large variety of surface finishes are available. All of them fitted with a removable protection foil to prevent any damage from occurring during installation. The design of the B-15M double leaf accommodation door and all components have been tested and approved according to international standards.

Accommodation doors

# Type B-15M double



Technical data	B-15M double
Covering layer (visible side)	Steel
Covering layer (back side)	Steel
Fire classification	B-15
Sound reduction	---
Thickness	40 mm
Element width - Clear opening	up to 2,200 mm
Element height - Clear opening	up to 2,200 mm
Weight	~ 105 kg *
Equipment - Ventilation	up to 500 cm <sup>2</sup> (each leaf)
- Kick-out panel	up to 600 x 600 mm (each leaf)
- Window	up to 400 x 400 mm (each leaf) or Ø 400 mm
Coating	PVC foil varnish coated (others on request)
Certification	MED, USCG

\* based upon clear opening of 1,600 x 2,000 mm respectively, without lock, escutcheons, handles and additional equipment

## Accommodation doors

# Type B-15M Connection



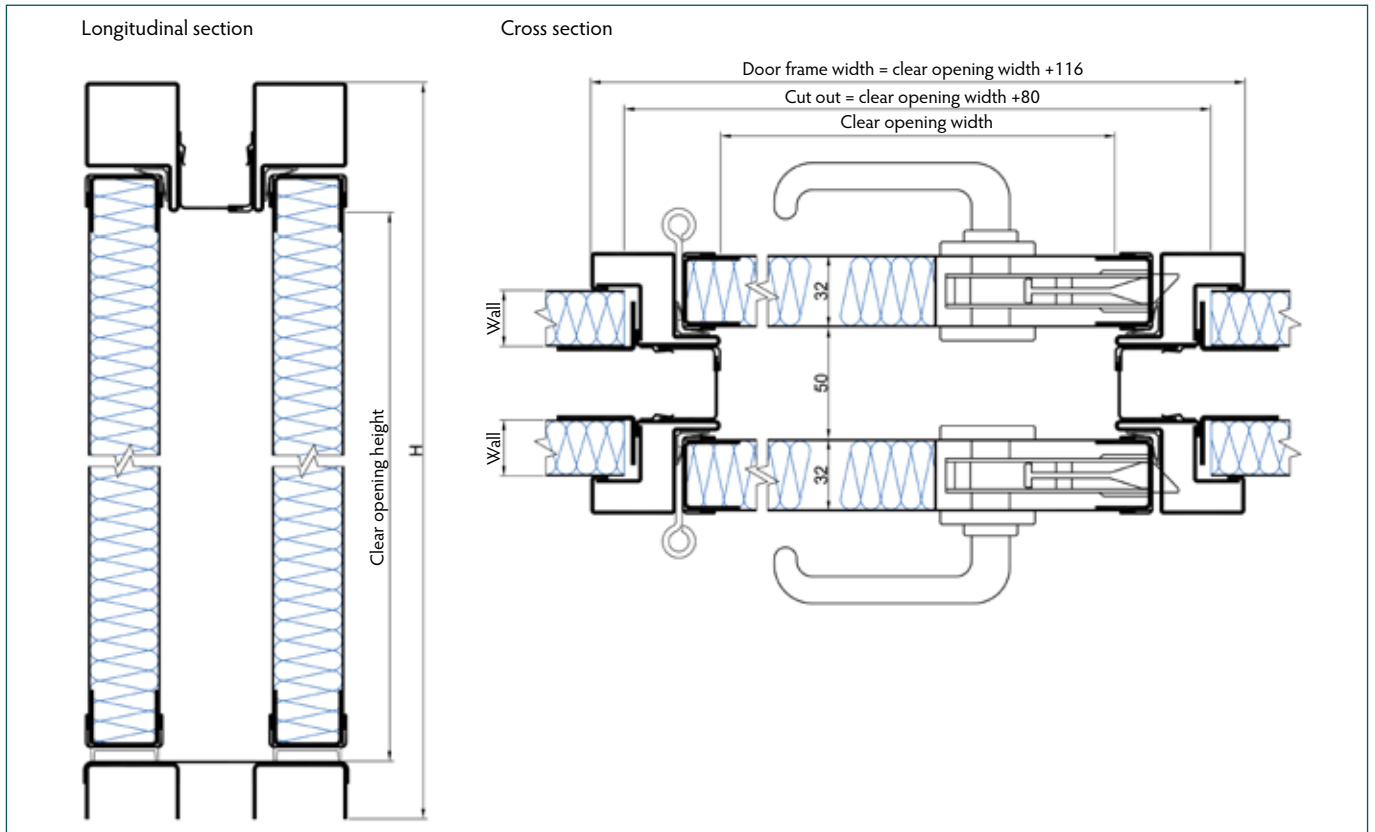
The B-15M Connection door is used to combine two separate compartments and create a larger accommodation space. Each door leaf is delivered with a separate frame which can be adjusted to fit all relevant wall systems thicknesses. The two door leaf frames are afterwards connected to each by using an adaptable connector.

A large variety of surface finishes are available. All of them fitted with a removable protection foil to prevent any damage from occurring during installation. The design of the B-15M Connection door and all components have been tested and approved according to international standards.



Accommodation doors

# Type B-15M Connection



Technical data	B-15M Connection
Covering layer (visible side)	Steel
Covering layer (back side)	Steel
Fire classification	B-15
Sound reduction	42 dB
Thickness	32 + 50 + 32 mm
Element width - Clear opening	up to 900 mm
Element height - Clear opening	up to 2,000 mm
Weight	~ 94 kg *
Coating	PVC foil varnish coated (others on request)
Certification	MED, USCG

\* based upon clear opening of 800 x 2,000 mm, without lock, escutcheons and handles

Accommodation doors

# Type B-15K & B-15K50

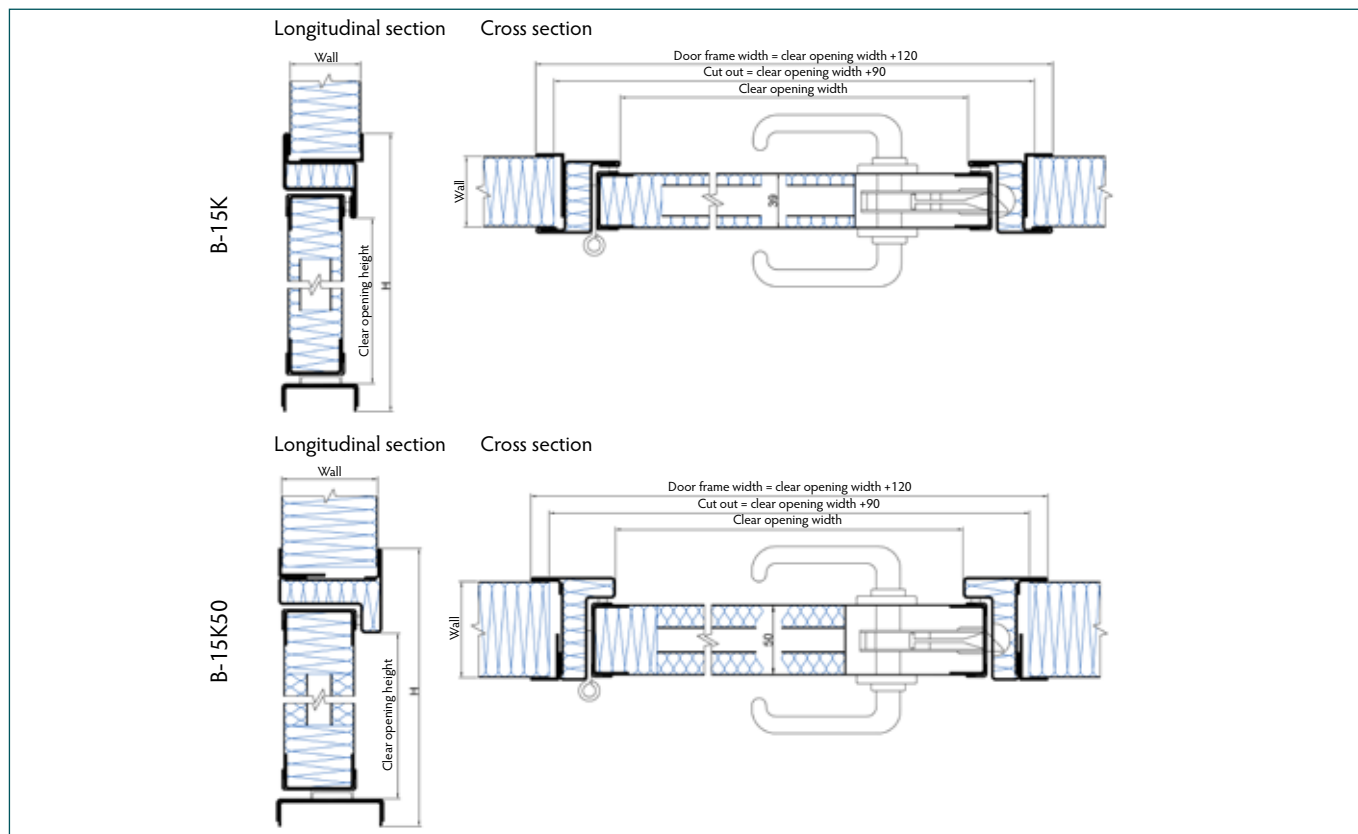


The B-15K and B-15K50 accommodation doors are used in B-15 fire rated wall systems and can be installed during or after the adjacent wall panels have been assembled. The doors come with a staggered ventilation as standard equipment. The split clamping frame can be adjusted to fit all relevant wall systems thicknesses. Depending on customer specifications various frame and coaming types as well as additional fixtures can be chosen.

A large variety of surface finishes are available. All of them fitted with a removable protection foil to prevent any damage from occurring during installation. The design of the B-15K and B-15K50 accommodation doors and all components have been tested and approved according to international standards.

Accommodation doors

# Type B-15K & B-15K50



Technical data	B-15K	B-15K50
Covering layer (visible side)	Steel	Steel
Covering layer (back side)	Steel	Steel
Fire classification	B-15	B-15
Sound reduction	up to 41 dB*	up to 34 dB*
Thickness	39 mm	50 mm
Element width - Clear opening	up to 1,000 mm **	up to 650 mm
Element height - Clear opening	up to 2,100 mm **	up to 1,990 mm
Weight	~ 69 kg ***	~ 68 kg ***
Equipment - Ventilation	up to 150 cm <sup>2</sup> - staggered	up to 200 cm <sup>2</sup> - staggered
- Kick-out panel	up to 600 x 600 mm	up to 500 x 500 mm
- Spy eye	✓	✓
- Internal cable duct	---	✓
Coating	PVC foil varnish coated (others on request)	PVC foil varnish coated (others on request)
Certification	MED, USCG	MED, USCG

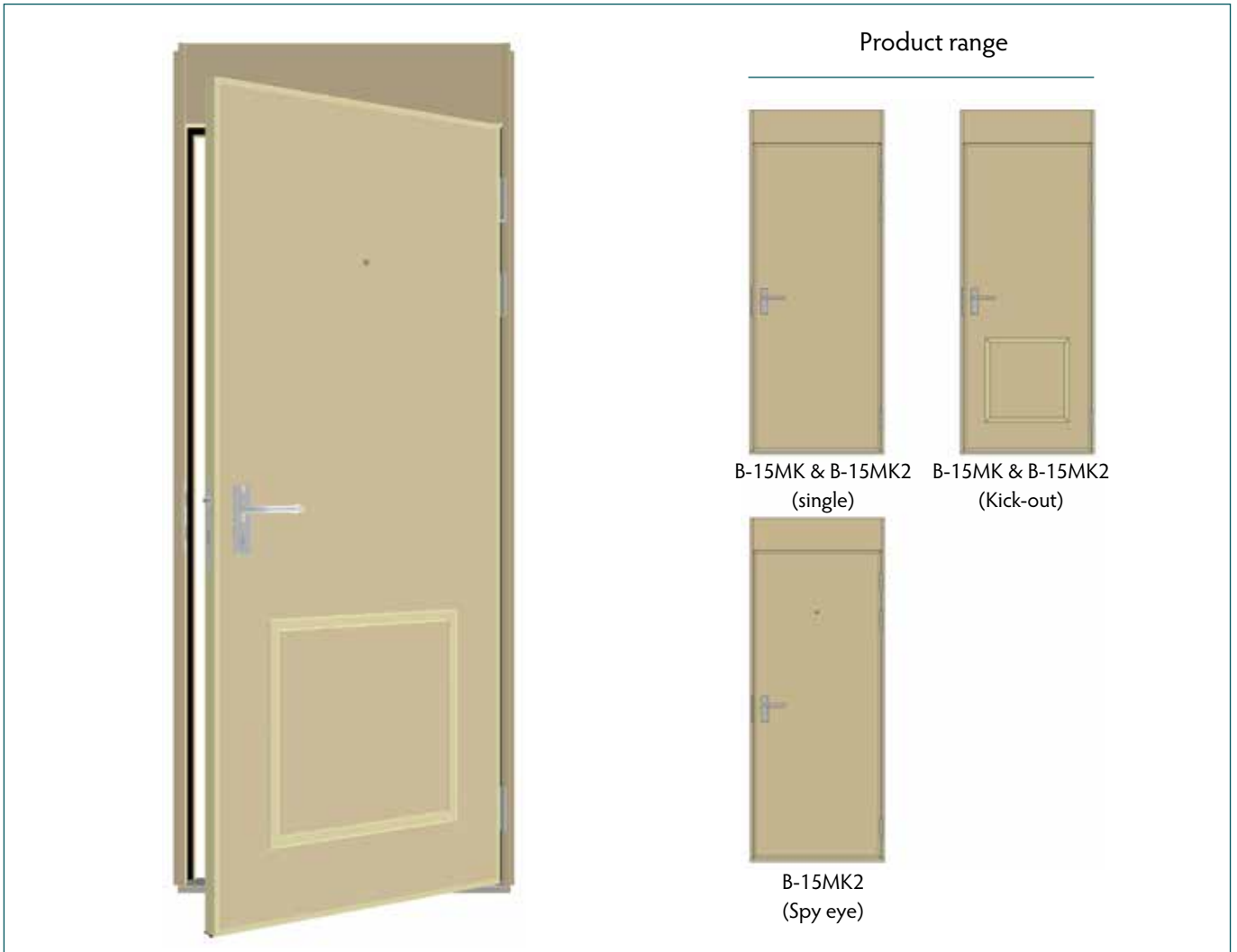
\* please contact us for further information

\*\* tested and certified according to MSC.1/Circ.1319 allowing additionally +15% in width & height (surface area +10%)

\*\*\* based upon clear opening of 650 x 1,950 mm and wall height of 2,200 mm, without lock, escutcheons, handles and additional equipment

Accommodation doors

Type B-15MK & B-15MK2

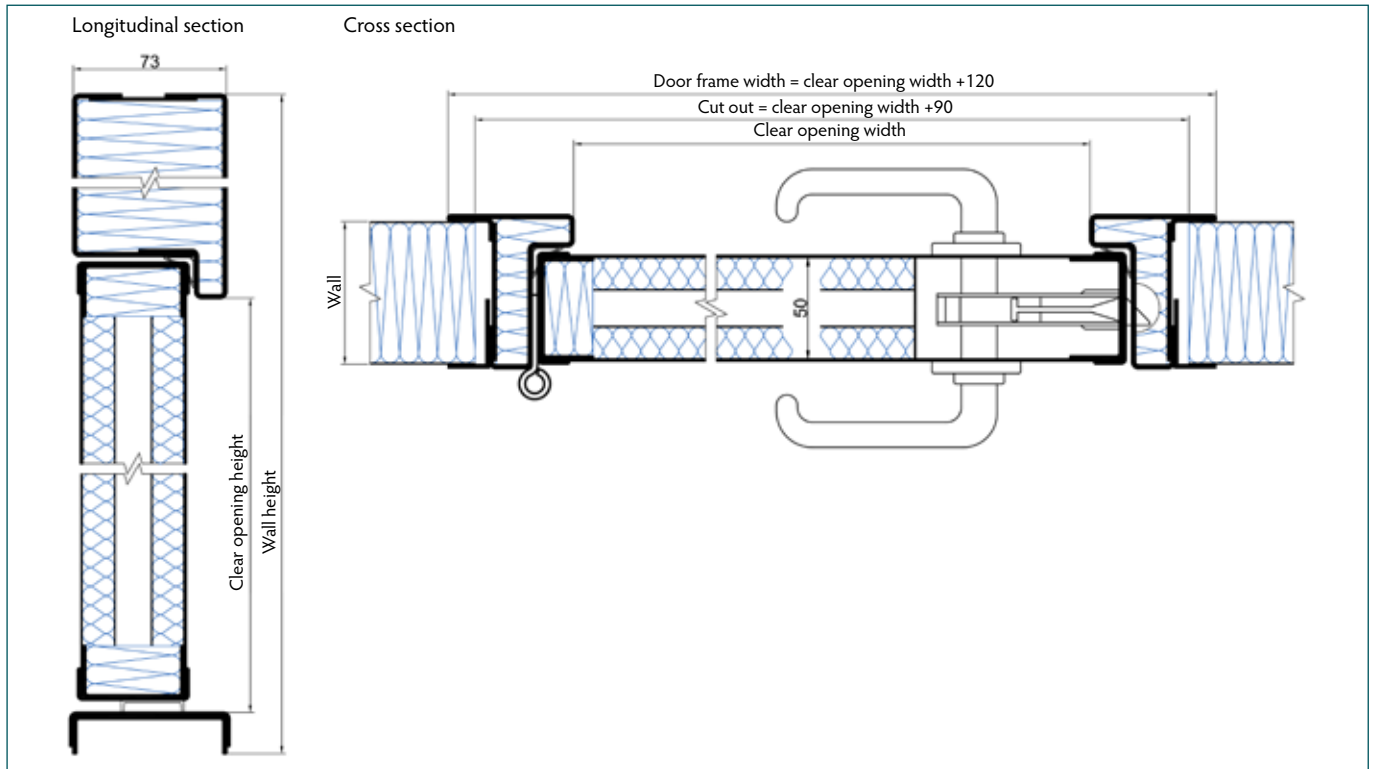


The B-15MK and B-15MK2 accommodation doors are used in B-15 fire rated wall systems and can be installed during or after the adjacent wall panels have been assembled. The doors have been designed for high sound reduction requirements of up to 42 dB. The split clamping frame can be adjusted to fit all relevant wall systems thicknesses. Depending on customer specifications additional fixtures can be chosen.

A large variety of surface finishes are available. All of them fitted with a removable protection foil to prevent any damage from occurring during installation. The design of the B-15MK and B-15MK2 accommodation doors and all components have been tested and approved according to international standards.

Accommodation doors

# Type B-15MK & B-15MK2



Technical data	B-15MK	B-15MK2
Covering layer (visible side)	Steel	Steel
Covering layer (back side)	Steel	Steel
Fire classification	B-15	B-15
Sound reduction	up to 40 dB*	up to 42 dB*
Thickness	50 mm	50 mm
Element width - Clear opening	up to 898 mm **	up to 900 mm
Element height - Clear opening	up to 2,097 mm **	up to 2,100 mm
Weight	~ 75 kg ***	~ 101 kg ***
Equipment - Kick-out panel	---	up to 600 x 800 mm
- Spy eye	---	✓
- Internal cable duct	---	✓
Coating	PVC foil varnish coated (others on request)	PVC foil varnish coated (others on request)
Certification	MED, USCG	MED, USCG

\* please contact us for further information

\*\* tested and certified according to MSC.1/Circ.1319 allowing additionally +15% in width & height (surface area +10%)

\*\*\* based upon clear opening of 800 x 2,000 mm and wall height of 2,200 mm, without lock, escutcheons, handles and additional equipment

Accommodation doors

# Type B-15 Sliding

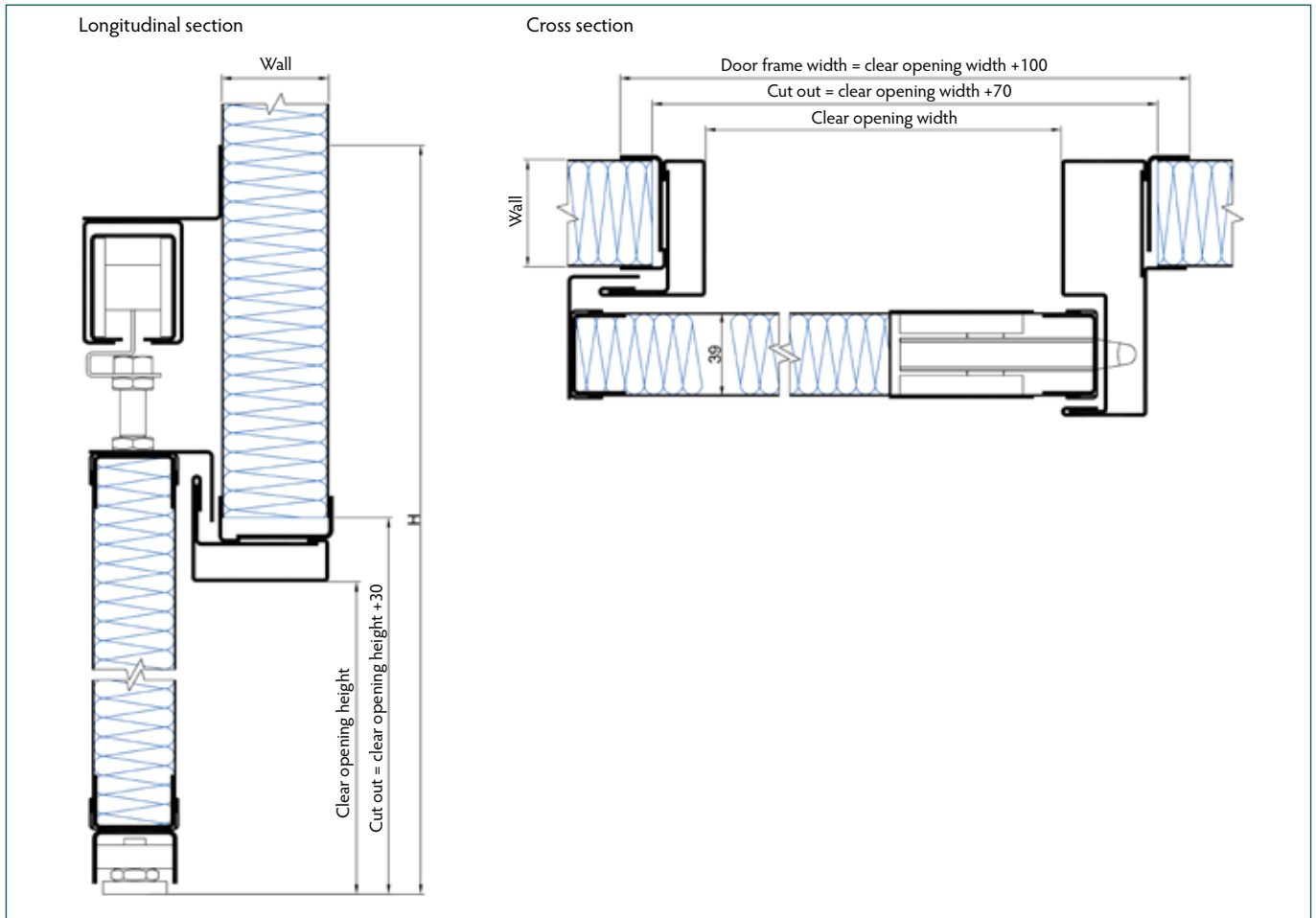


The B-15 Sliding door is used in B-15 fire rated wall systems and can be installed after the adjacent wall panels have been assembled. The split clamping frame can be adjusted to fit all relevant wall systems thicknesses. Depending on customer specifications the door can be equipped with a window.

A large variety of surface finishes are available. All of them fitted with a removable protection foil to prevent any damage from occurring during installation. The design of the B-15 Sliding door and all components have been tested and approved according to international standards.

Accommodation doors

# Type B-15 Sliding

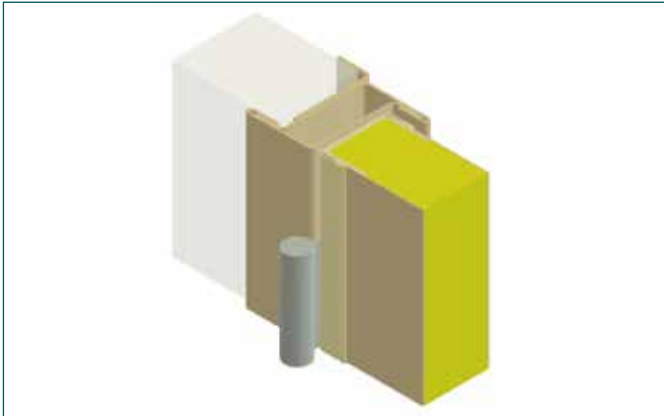


Technical data	B-15M Sliding
Covering layer (visible side)	Steel
Covering layer (back side)	Steel
Fire classification	B-15
Sound reduction	---
Thickness	39 mm
Element width - Clear opening	up to 2,400 mm
Element height - Clear opening	up to 2,300 mm
Weight	~ 95 kg *
Equipment - Window	up to 400 x 400 mm or Ø 400 mm
Coating	PVC foil varnish coated (others on request)
Certification	MED, USCG

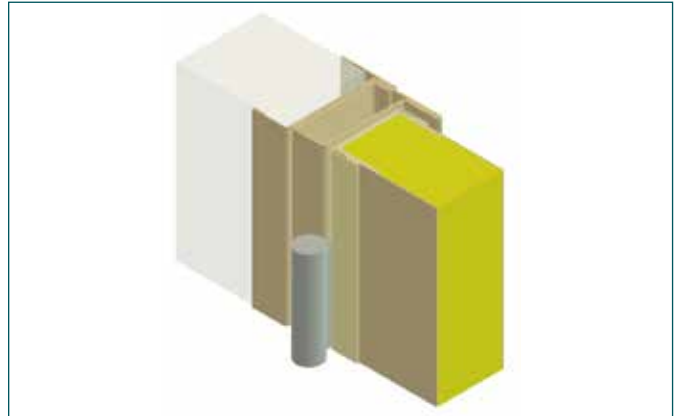
\* based upon clear opening of 1,300 x 2,000 mm, without lock, escutcheons, handles, automatic closing mechanism and additional fixtures

Accommodation doors

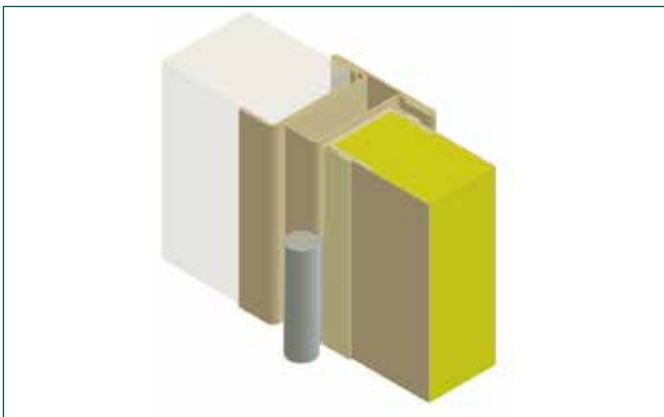
# Frame Types for B doors



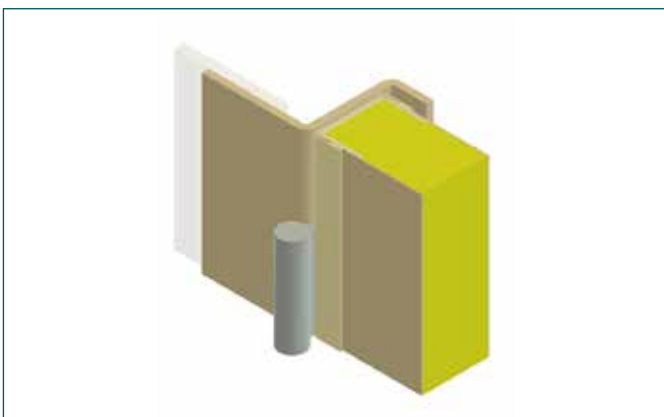
Z-Type



Box-Type



T-Type



Steel frame



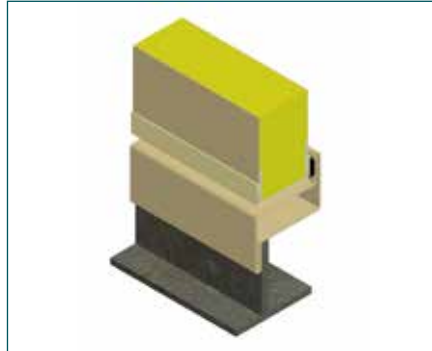
## Accommodation doors

# Sill Types for B doors

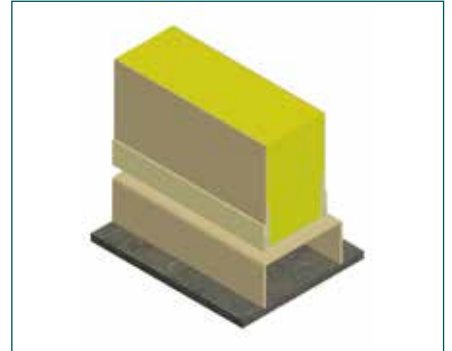
Following types can be covered with stainless steel step rail.



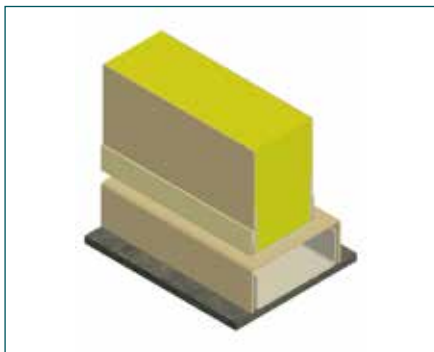
Type 1



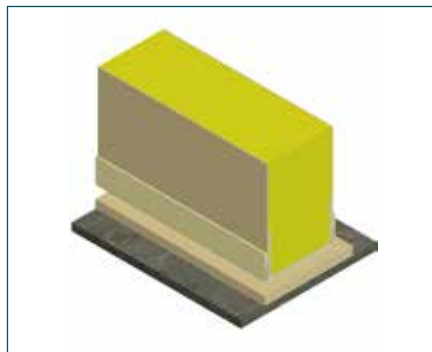
Type 2



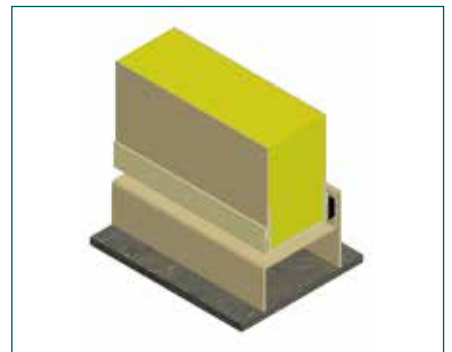
Type 3\*



Type 4\*\*



Type 5\*



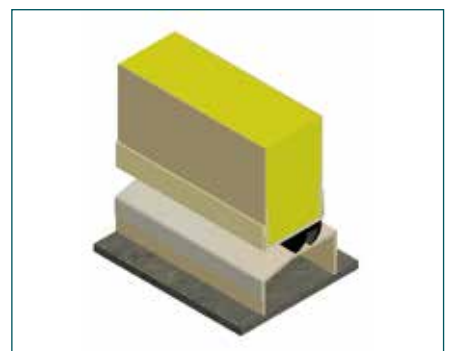
Type 7



Type 8



Type 9



Type 11

\* door leafs can optionally be equipped with bottom gasket

\*\* bottom profile of wall running continuously under door sill

Accommodation doors

Type A-15 single

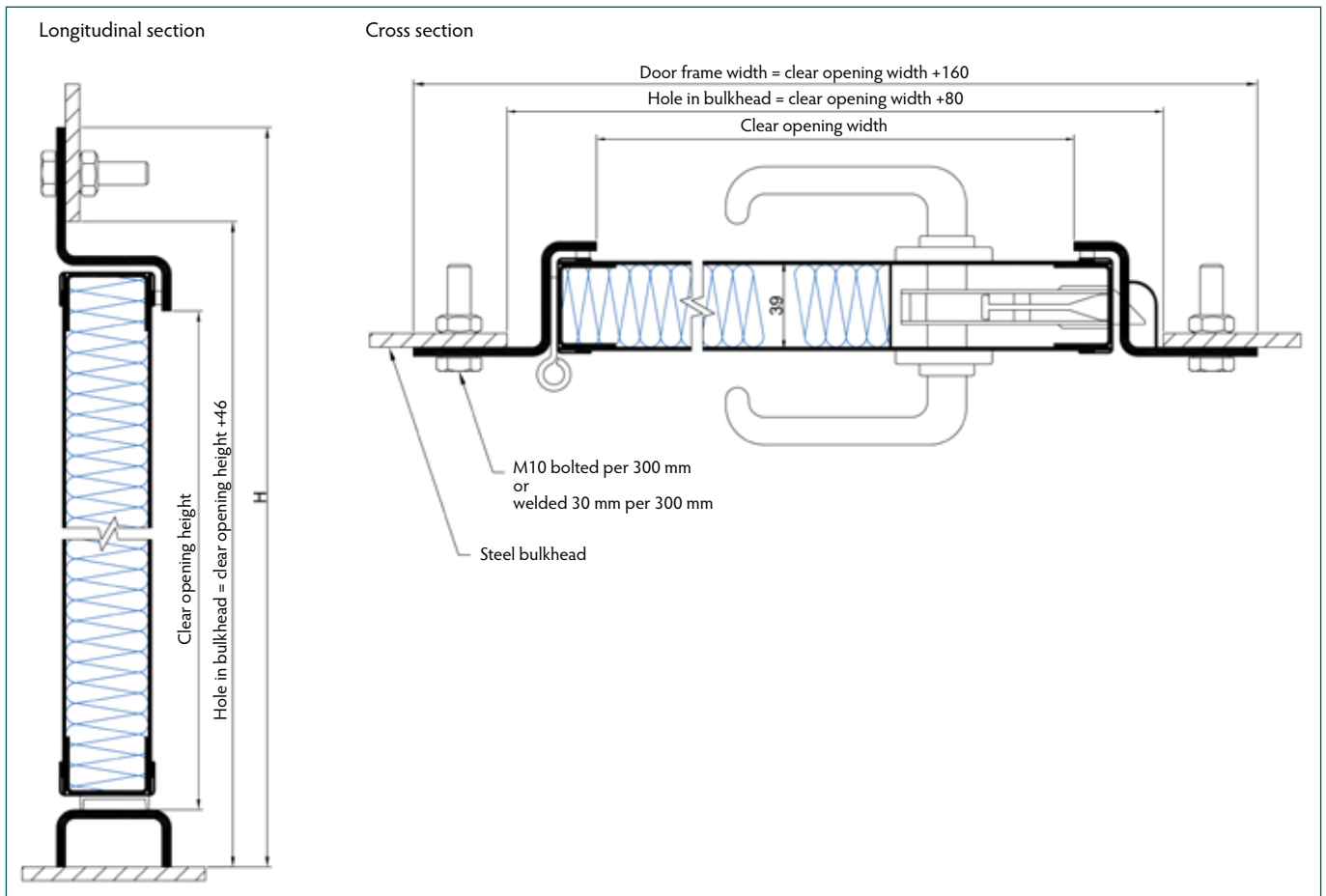


The A-15 single accommodation door is used in A-15 fire rated steel bulkheads and can be installed by bolting or welding. Depending on customer specifications various frame and coaming types as well as additional fixtures can be chosen.

A large variety of surface finishes are available. All of them fitted with a removable protection foil to prevent any damage from occurring during installation. The design of the A-15 single accommodation door and all components have been tested and approved according to international standards.

Accommodation doors

# Type A-15 single



Technical data	A-15 single
Covering layer (visible side)	Steel
Covering layer (back side)	Steel
Fire classification	A-15
Sound reduction	up to 33 dB*
Thickness	39 mm
Element width - Clear opening	up to 1,200 mm **
Element height - Clear opening	up to 2,200 mm **
Weight	~ 87 kg ***
Equipment - Hose port - Window	up to 150 x 150 mm up to 400 x 400 mm or Ø 400 mm
Coating	PVC foil varnish coated (others on request)
Certification	MED, USCG

\* please contact us for further information

\*\* tested and certified according to MSC.1/Circ.1319 allowing additionally +15% in width & height (surface area +10%)

\*\*\* based upon clear opening of 800 x 2,000 mm, without lock, escutcheons and handles

Accommodation doors

Type A-60 single

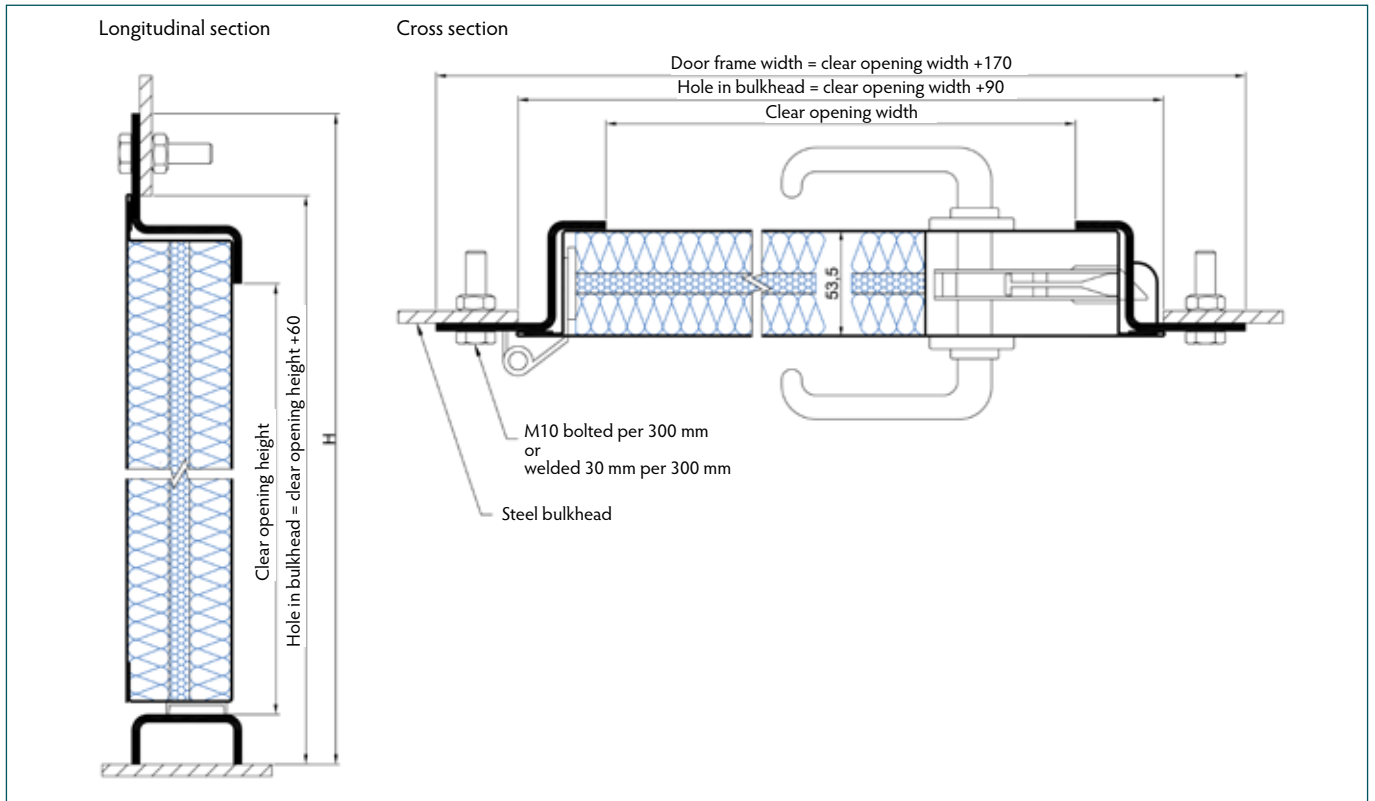


The A-60 single accommodation door is used in A-60 fire rated steel bulkheads and can be installed by bolting or welding. Depending on customer specifications various frame and coaming types, additional fixtures and gas tight option can be chosen.

A large variety of surface finishes are available. All of them fitted with a removable protection foil to prevent any damage from occurring during installation. The design of the A-60 single accommodation door and all components have been tested and approved according to international standards.

## Accommodation doors

# Type A-60 single



Technical data	A-60 single
Covering layer (visible side)	Steel
Covering layer (back side)	Steel
Fire classification	A-60
Sound reduction	up to 34 dB*
Thickness	53.5 mm
Element width - Clear opening	up to 1,250 mm **
Element height - Clear opening	up to 2,200 mm **
Weight	~ 108 kg ***
Equipment - Hose port	up to 150 x 150 mm
- Window	up to 400 x 400 mm or Ø 400 mm
Coating	PVC foil varnish coated (others on request)
Certification	MED, USCG

\* please contact us for further information

\*\* tested and certified according to MSC.1/Circ.1319 allowing additionally +15% in width & height (surface area +10%)

\*\*\* based upon clear opening of 800 x 2,000 mm, without lock, escutcheons, handles and additional equipment

Accommodation doors

Type A-60 double

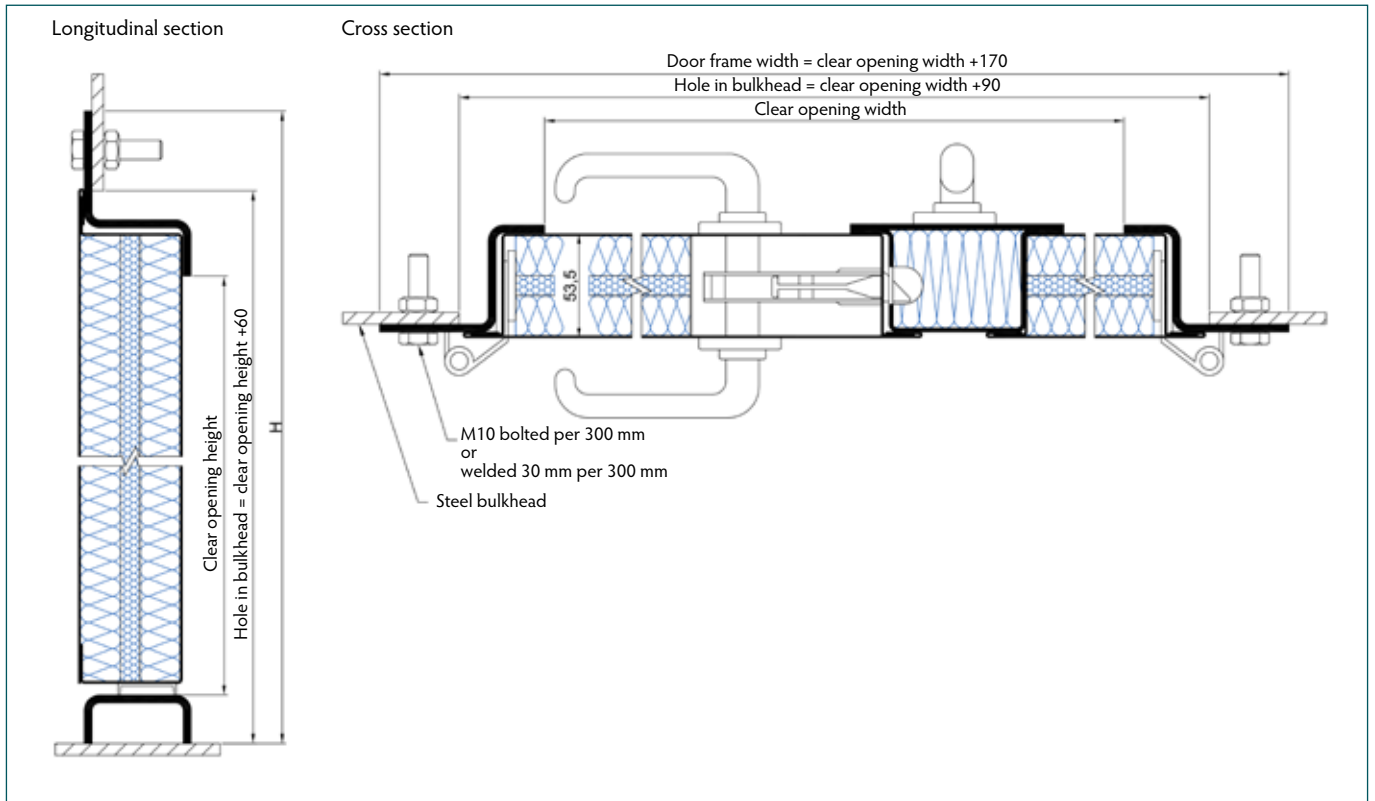


The A-60 double leaf accommodation door is used in A-60 fire rated steel bulkheads and can be installed by bolting or welding. Depending on customer specifications various frame and coaming types, additional fixtures and gas tight option can be chosen.

A large variety of surface finishes are available. All of them fitted with a removable protection foil to prevent any damage from occurring during installation. The design of the A-60 double leaf accommodation door and all components have been tested and approved according to international standards.

Accommodation doors

# Type A-60 double

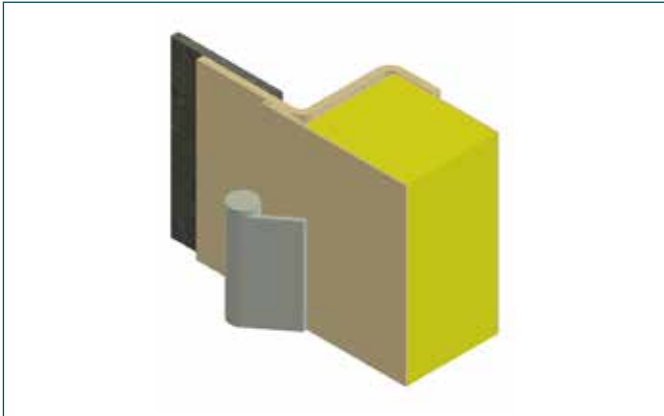


Technical data	A-60 double
Covering layer (visible side)	Steel
Covering layer (back side)	Steel
Fire classification	A-60
Sound reduction	---
Thickness	53.5 mm
Element width - Clear opening	up to 2,500 mm
Element height - Clear opening	up to 2,200 mm
Weight	~ 201 kg *
Equipment - Hose port	up to 150 x 150 mm
- Window	up to 400 x 400 mm or Ø 400 mm
Coating	PVC foil varnish coated (others on request)
Certification	MED, USCG

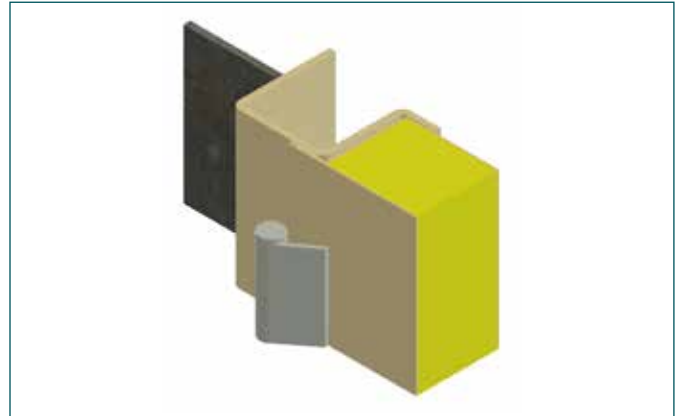
\* based upon clear opening of 1,600 x 2,000 mm, without lock, escutcheons, handles and additional equipment

Accommodation doors

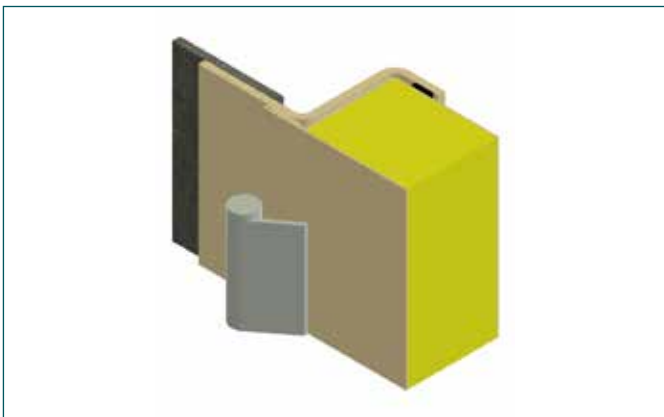
# Frame Types for A doors



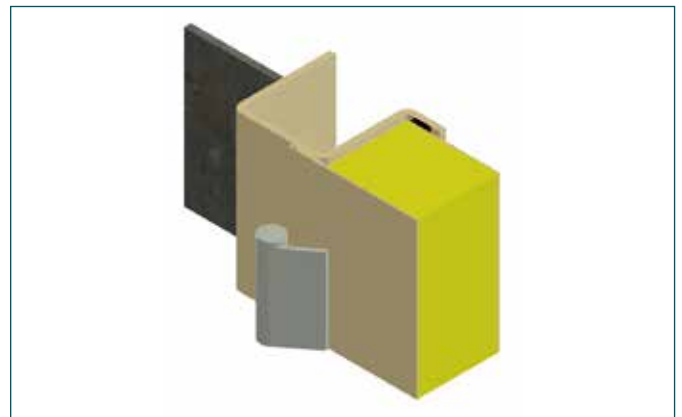
Type 1Z



Type RINA



Type 1GT



Type RINA GT



Type 1GT (MSA)



## Accommodation doors

# Sill Types for A doors

Following types can be covered with stainless steel step rail.



Type 1\*



Type 2\*



Type 3\*



Type 1GT



Type 2GT



Type RINA



Type 1GT (MSA)



Type 2GT (MSA)



Type RINA GT



Type 1Z



Type 2Z

\* door leaves can optionally be equipped with bottom gasket

# Contact us

## **R&M Alvedoor (Kunshan) Co. Ltd.**

Building D of Euro-Park,  
78 Gucheng Road (M) Kunshan  
215 300 Kunshan/P.R. of China  
phone +86 512 5518 0328  
china@rm-group.com

## **R&M Ship Technologies GmbH**

Werftstraße 4  
23966 Wismar/Germany  
phone +49 3841 3263-0

Petridamm 11c  
18146 Rostock/Germany  
phone +49 381 6584-100-0  
germany@rm-group.com

## **Image credit**

René Garmider

## **Important notice**

All 2D and 3D drawings in this product catalogue are only illustrations and guidelines. The specifications given in our quotations are valid only.

## **Publisher**

### **R&M Group**

R&M International GmbH  
Schellerdamm 22-24 ■ 21079 Hamburg/Germany  
www.rm-group.com

Reproduction, in whole or in part, is only permitted with the explicit written consent of the publisher.

Issue RM-2020-1-E