



Rheinhold & Mahla

Since 1887



Wet units and wet pods



Table of contents

Introduction

Wet units and pods

■ Prefabricated wet units	1
■ Type Crew cabin layout	3
■ Type Passenger cabin layout	4
■ Type Pod layout	5

Interior outfitting manufactured by the R&M Group

The products of the R&M Group provide efficient, individual and turnkey solutions for interior outfitting. The extensive portfolio ranges from doors, wet units and pods to furniture, which are manufactured at our production facilities in Wismar and in Rostock (Germany) as well as in Kunshan (China). With our own modern product facilities, we are able to offer very flexible according to customers' requirements and wishes. We consider simultaneously the design as well as economic issues, which play a key role in our daily business.

All the high-quality products meet the highest standards and the most stringent international guidelines. They are characterized with the best fire, noise and vibration protection ensuring comfort and safety on board for passengers as well as crew members. We deliver just-in-time to any desired location in the world.

Production facilities

Wismar

In Wismar, we produce furniture according to standard specifications and individual customer requirements. Our excellent design solutions are continuously developed. Thanks to the latest computerized numerical control (CNC) machines, we are also able to meet the most specific requirements in a short turnaround time while maintaining our quality guarantee. Furthermore, together with our suppliers we can offer a range of products, from sophisticated stainless-steel work and superior solid surfaces to creative mirrors, glass features, and high-grade upholstery.

Rostock

In Rostock, which is very close to Wismar, our central warehouse and logistics center is located as well as the facility for final assembly of our furniture manufacture from Wismar.

Kunshan

Further production facility is located in Kunshan, near Shanghai. It is the larger facility, where we manufacture for example wet units, doors, wall and ceiling systems. European standards of quality and international logistic guidelines are strictly observed during the entire manufacturing process. The team is multinational and has long-term experience and knows each important characteristics of products.

Our competences

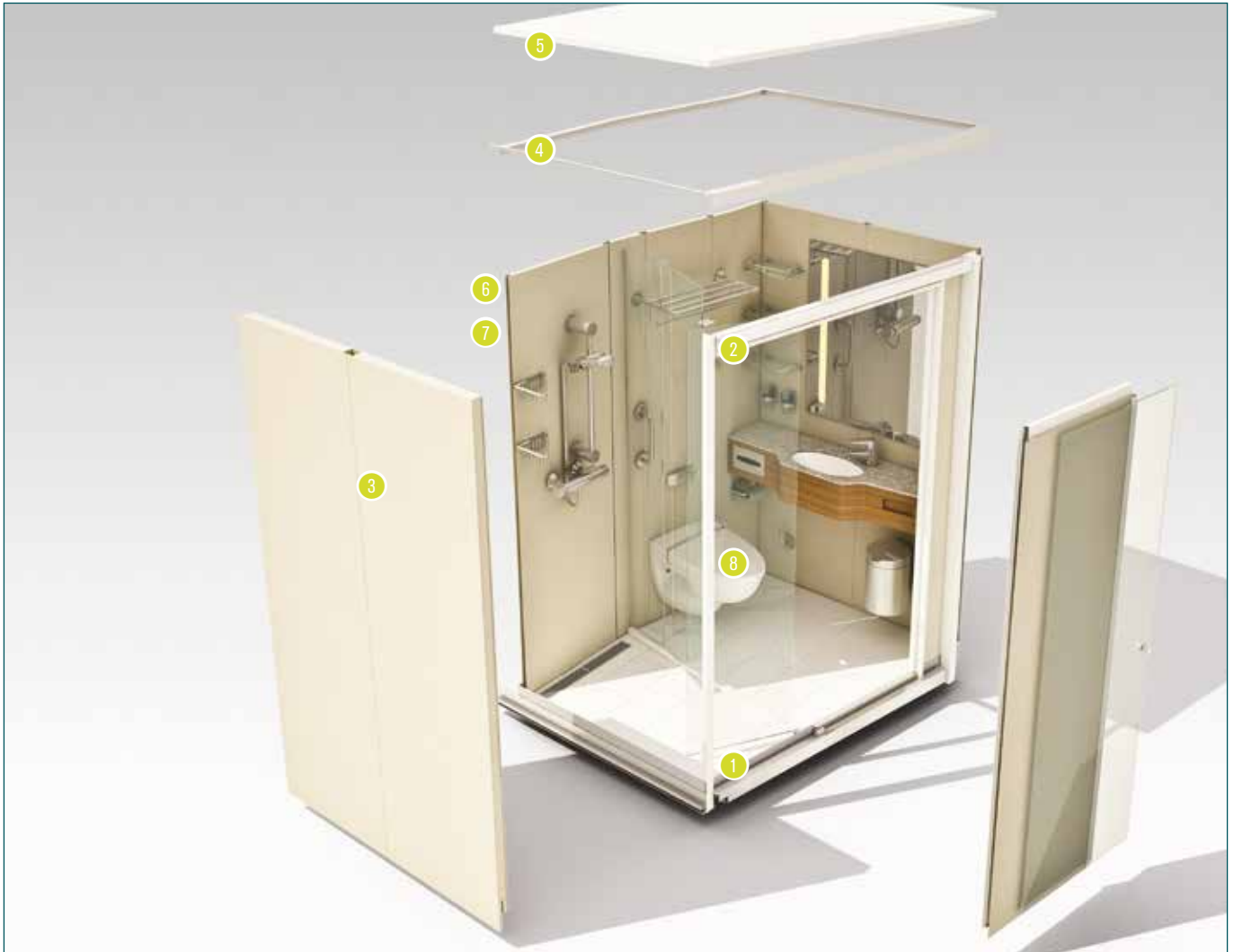
- Individual customizations and configurations on request
- Complete installation for electrical, air-conditioning and sprinkler systems
- Just-in-time delivery
- Guarantee of quality
- Products at best price-performance ratio
- Assembly line for prefabricated wet units and cabins on site
- Tested and approved structural materials
- Worldwide shipping, assembly and installation on board

Quality management system

- Quality management system in accordance with the international norm ISO 9001
- Quality assurance system are compliant with Maritime Equipment Directive, Modul D
- It consists of incoming inspection per category, in-process quality control and outgoing inspection and release to delivery
- Quality standards are monitored by the multicultural R&M Quality Management Team

Wet units

Prefabricated wet units



Wet unit structure

- ① Fully welded floor pan with integrated connection for pipes
- ② Door frame with connection profile for incorporating the cabin wall system
- ③ Wall panels bolted together for good stability. The insides of the panels are lined with PVC-coated steel sheets; the outsides of the panels consist of galvanized steel sheets.
- ④ Corner profile made of galvanized steel to strengthen the wall connection
- ⑤ Ceiling panel is 30 mm thick. Cables and cutouts are covered by special insulation on top
- ⑥ Exhaust air diffuser
- ⑦ Copper or plastic fresh water pipes
- ⑧ Vacuum or gravity-fed toilet

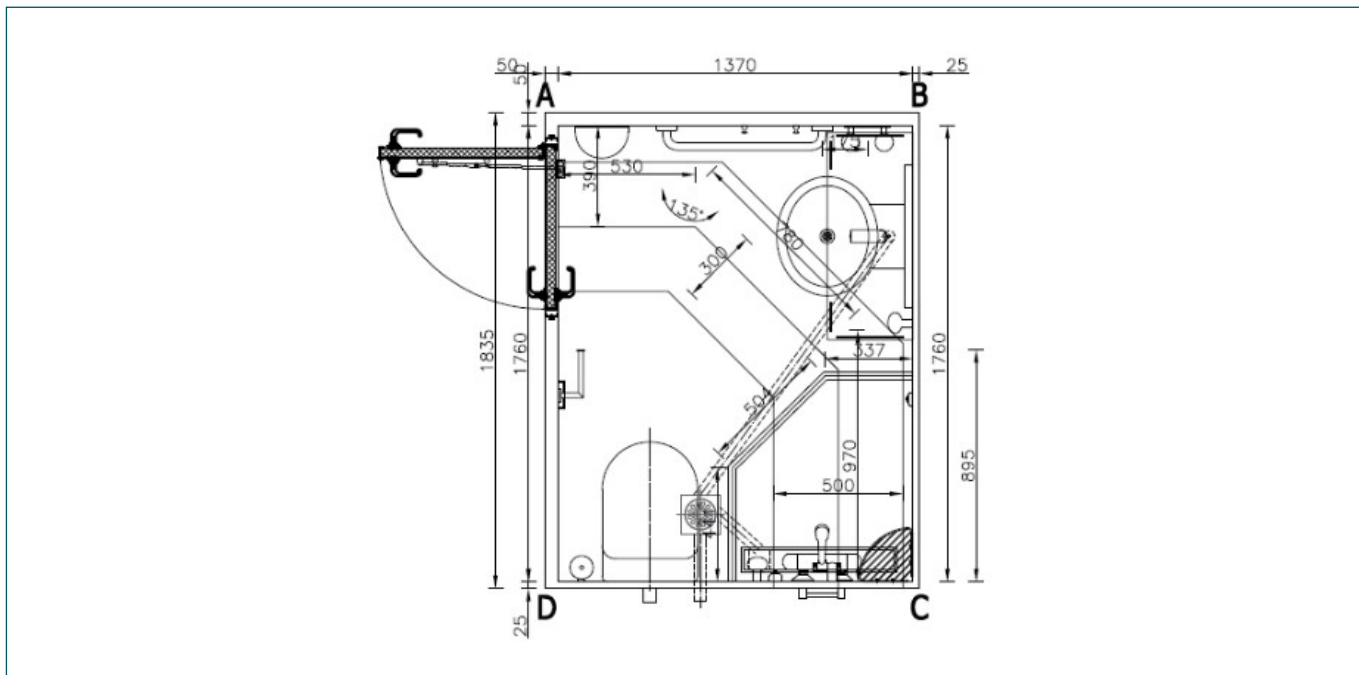
Wet units

Prefabricated wet units

Technical data	
Category	Wet units for passenger and crew cabins on board every type of ships and maritime facilities to meet individual standards
Fire integrity	B-15 construction with high attenuation properties
Floor pan	Stainless steel, aluminum or preserved black steel with Bolidt floor, epoxy covering, PU covering or tile covering
Walls	Sandwich construction with PVC foil covering in various patterns, or steel construction with outside insulation and tiling or synthetic material surfaces from inside, if necessary the panel behind the toilet bowl can be equipped with an inspection hatch for access to the vacuum technology from inside
Doors	Sandwich construction with air gap below door leaf, with WC lock, escutcheons with green/red indicator and door limiter
Ceiling	Sandwich construction with PVC foil covering or lacquered surface
Accessories	Matching washbasin, water mixer for shower and washbasin, toilet of vacuum or gravity type, shower curtain or glass partition, handrails, towel hooks or bars, mirror and tumbler
Electric	Ceiling light, wall lamps or illuminated mirror cabinets ready for connection at the junction box
Plumbing	Stainless steel black water pipes fully welded below floor pan, plastic or copper pipes for fresh water installation
Air-conditioning	Only waste air by exhaust air nozzle in wall or ceiling panel

Wet units

Type Passenger cabin layout



The wet unit Type Passenger cabin layout is for passenger cabins on board of every types of ships and maritime facilities. It consists of a toilet, a shower with a glass wall and door as well as a washbasin. A large variety of equipment is available. The wet units meet all individual needs, are manufactured according to the highest quality standards and comply with the most recent safety regulations.

The pipelines, SUS crimping or GF IFIT, for fresh, gray and black water and the wiring for the electrics are already installed when the wet unit is delivered.

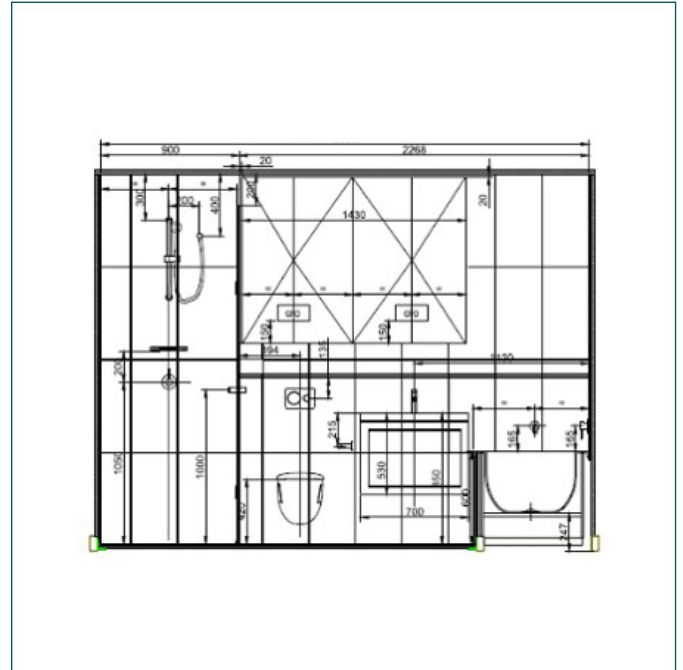
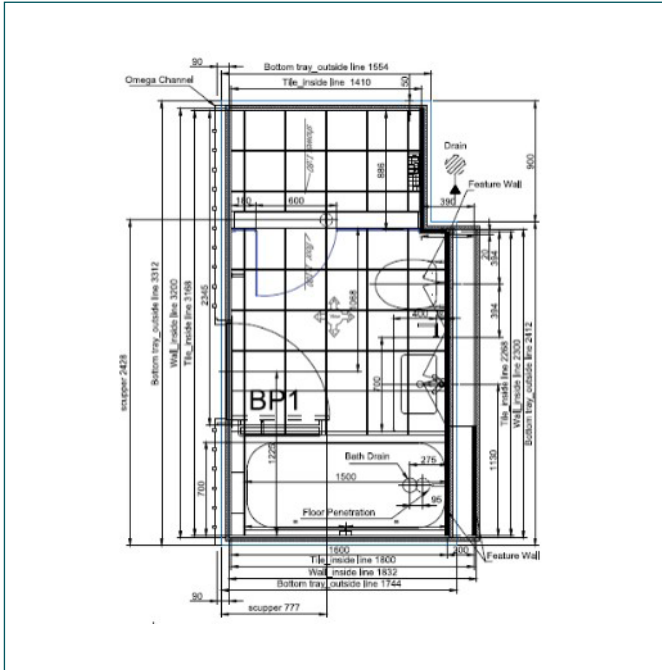
Technical data & Equipment	Description
Bottom tray	3 mm steel plate
Floor	Tiles/PVC/Epoxy
Wall panel	25/50 mm, PVC:Y-1058
Ceiling panel	30 mm, PVC:Y-1058
Door frame	CO: 600 x 1,760, Power coated
Door leaf	PVC:Y-1058
Door lock system	Hujiang C-4
Towel bar	L-600 mm
Shower mixer	Thermostatic mixing
Scupper	150 x 150
Inlet pipe	Ø 16
Cable	3"1.5
Junction box	XiePu

Further accessories are available, for example:
 Door holder, washbasin system or mixer, soap dish, mirror cabinet, razor socket, coat hook, toilet

brush, shower set, hygienic bag dispenser, curtain, curtain rail, waste bin, tissue holder, glass cup,
 vacuum toilet, ball valve, angle valve or clear glass shower.

Wet pods

Type Pod layout



The wet pod is for the land base segment and can be installed in all buildings. It consists of a toilet, a shower with a glass wall and door as well as a washbasin. A large variety of equipment and fittings is available. The wet units meet all individual needs, are manufactured according to the highest quality standards and comply with the most recent safety regulations.

The pipelines, SUS crimping or GF IFIT, for fresh, gray and black water and the wiring for the electrics are already installed when the wet unit is delivered.

Technical data & Equipment	Description
Bottom tray	3 mm steel plate
Floor	Tiles/PVC/Epoxy
Wall panel	25/50 mm, PVC:Y-1058
Ceiling panel	30 mm, PVC:Y-1058
Door frame	CO: 600 x 1,760, Power coated
Door leaf	PVC:Y-1058
Door lock system	Hujiang C-4
Towel bar	L-600 mm
Shower mixer	Thermostatic mixing
Scupper	150 x 150
Inlet pipe	Ø 16
Cable	3"1.5
Junction box	XiePu

Further accessories are available, for example:
 Door holder, washbasin system or mixer, soap dish, mirror cabinet, razor socket, coat hook, toilet

brush, shower set, hygienic bag dispenser, cur-tain, curtain rail, waste bin, tissue holder, glass cup, vacuum toilet, ball valve, angle valve or clear glass shower.

Contact us

R&M Alvedoor (Kunshan) Co. Ltd.

Building D of Euro-Park,
78 Gucheng Road (M) Kunshan
215 300 Kunshan/P.R. of China
phone +86 512 5518 0328
china@rm-group.com

R&M Ship Technologies GmbH

Werftstraße 4
23966 Wismar/Germany
phone +49 3841 3263-0

Petridamm 11c
18146 Rostock/Germany
phone +49 381 6584-100-0
germany@rm-group.com

Image credit

Alexander Rudolph

Important notice

All 2D and 3D drawings in this product catalogue are only illustrations and guidelines. The specifications given in our quotations are valid only.

Publisher

R&M Group

R&M International GmbH
Schellerdamm 22-24 ■ 21079 Hamburg/Germany
www.rm-group.com

Reproduction, in whole or in part, is only permitted with the explicit written consent of the publisher.

Issue RM-2020-1-E